

# HDT80

**product  
guide**

## features

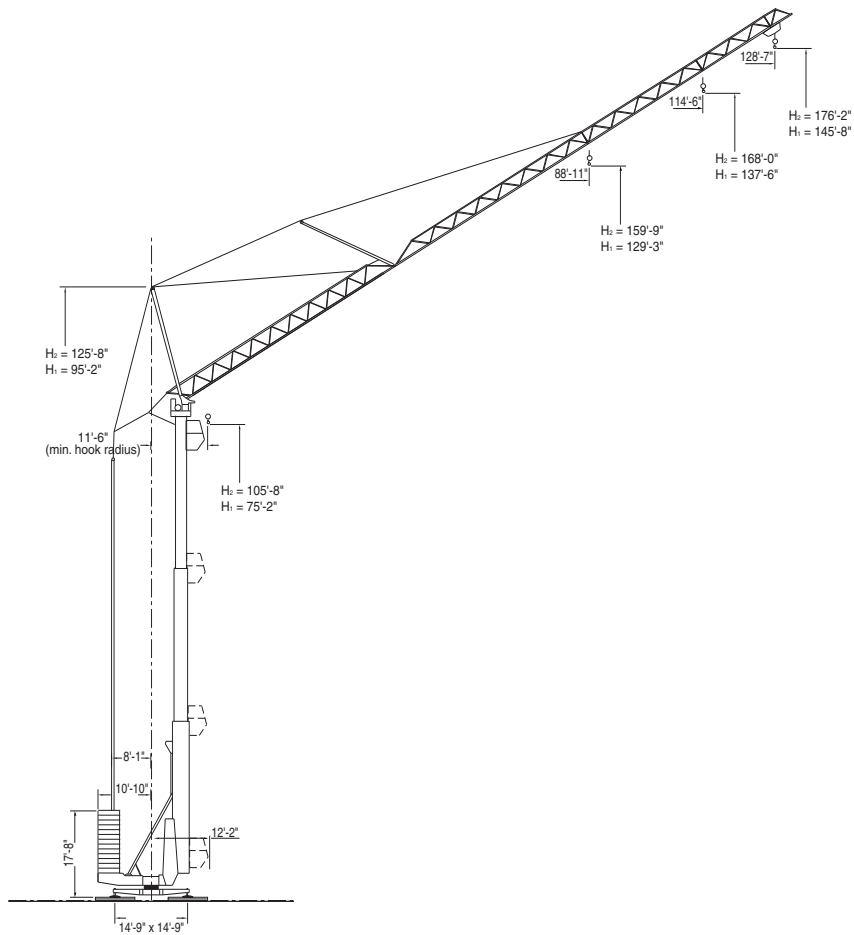
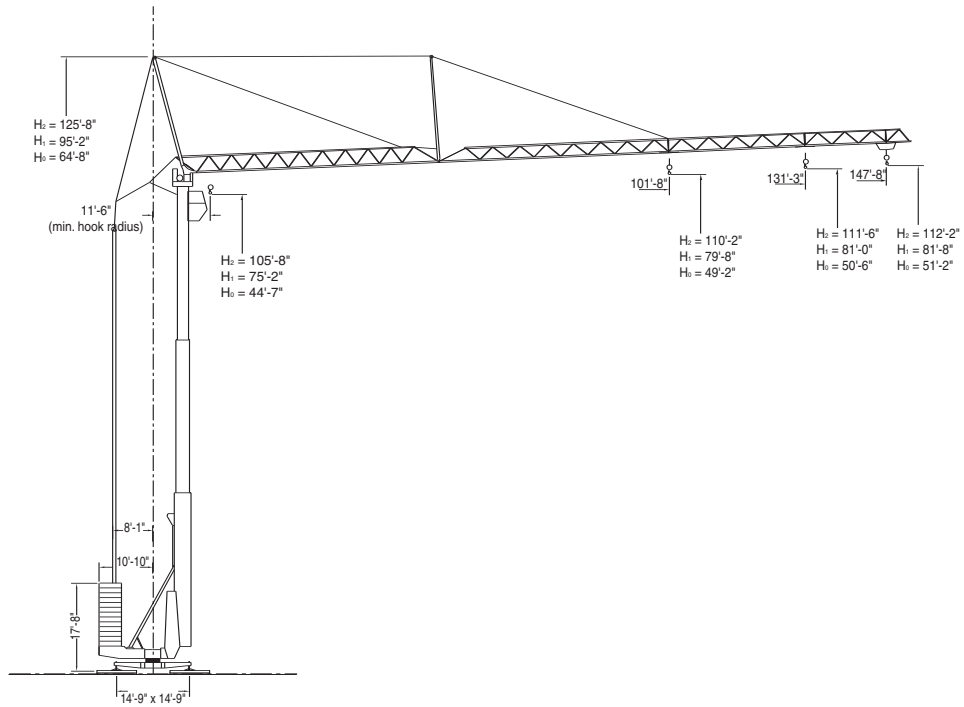
- 13,228 lb. maximum load capacity
- 147'-8" maximum operating hook radius
- 176'-2" maximum hook height with jib set at 30 degrees
- 112'-2" maximum hook height with jib set at 0 degrees
- 10 different jib configurations
- 3 different mast heights
- Trolley speeds up to 190 ft/min with 7,937 lbs and 144 ft/min with 13,228 lbs
- Swing speeds up to 0.8 rpm
- Manitowoc Crane Care comprehensive support

## contents

Outline Dimensions	2
Rated Load Charts	4
Mechanical Data	6

# outline dimensions

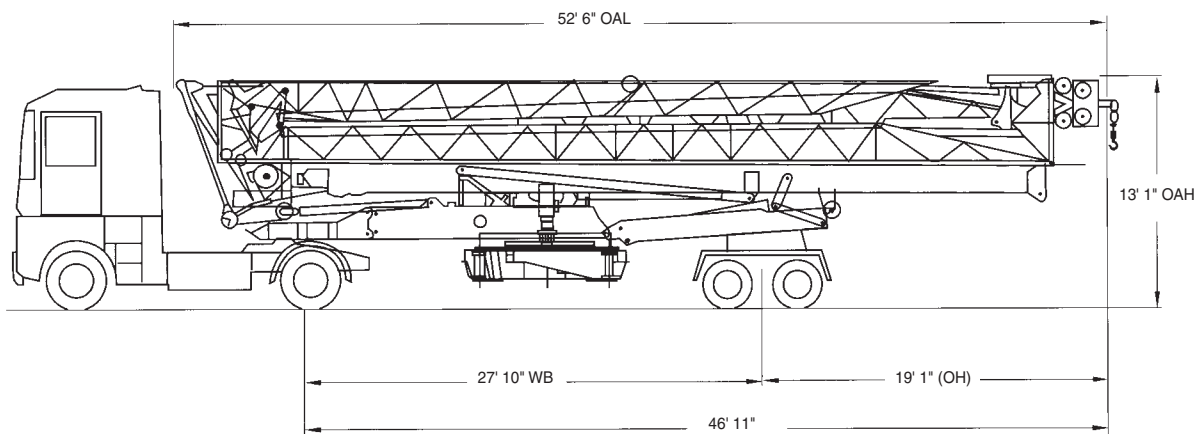
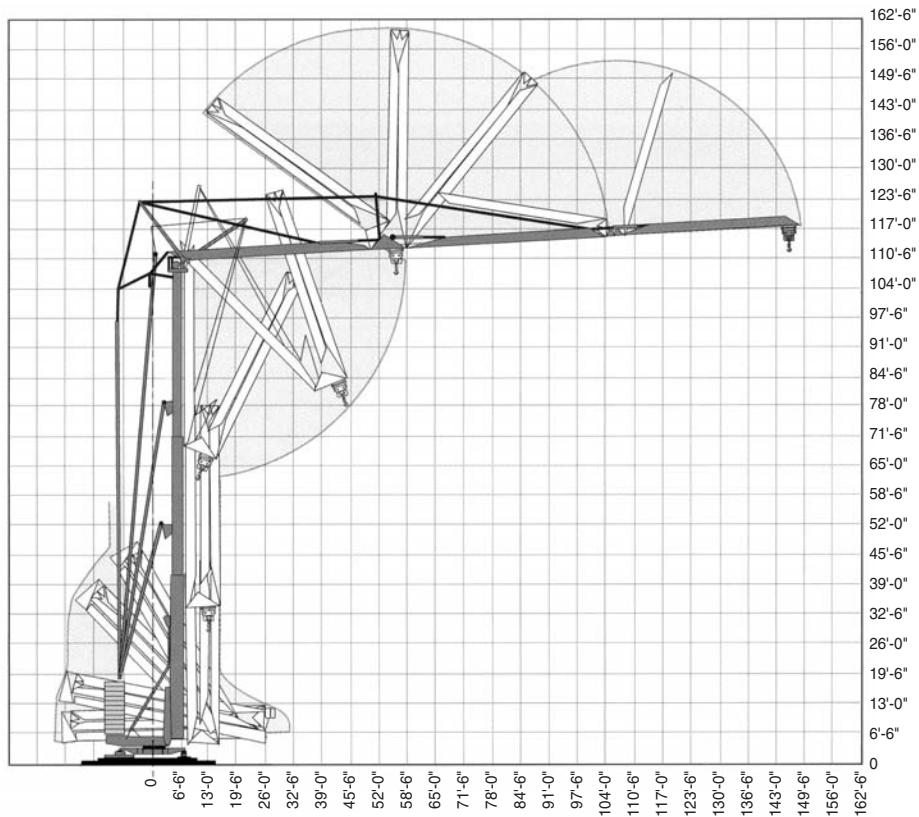
2



HDT80

# outline dimensions

3



## Chassis Data

Overall Length (OAL) (in transport position)	52'6"
Overhang (OH) (in transport position)	19'1"
Overall Height (OAH) (in transport position)	13'1"
Overall Width (in transport position)	8'2"

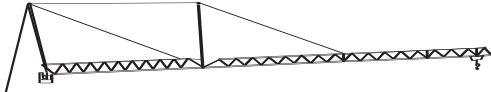
## Weights

Total Crane – with Counter Weight	138,687 lb.
Total Crane – on Transport Axle SL122/J215M	57,992 lb.
Fifth Wheel	17,861 lb.
Rear (drive) Axles	40,131 lb.
Crane Counterweight	81,705 lb.

**HDT80**

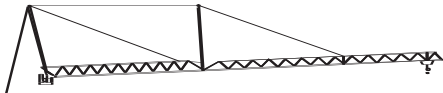
# rated load charts

4



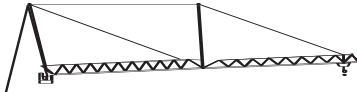
Jib Configuration: L45 with maximum hook reach of 147'-8" set at 0 degrees																
Hook Reach (ft)	11'-6"	43'-8"	49'-3"	55'-9"	65'-7"	72'-2"	77'-9"	82'-0"	88'-7"	98'-5"	105'-0"	114'-10"	121'-5"	131'-3"	137'-10"	147'-8"
Reeving	Capacities (lbs)															
DM	13,228	13,228	11,321	9,678	7,915	7,022	-	5,975	5,423	4,740	4,365	3,880	3,605	3,241	3,031	2,756
SM1	6,614	6,614	6,614	6,614	6,614	6,614	6,614	6,195	5,644	4,960	4,586	4,101	3,825	3,461	3,252	2,976

Maximum Hook Heights at Jib Tip:  $H_2 = 112'-2"$ ,  $H_1 = 81'-8"$ ,  $H_0 = 51'-2"$   
 Maximum Hook Heights at Jib Foot:  $H_2 = 105'-8"$ ,  $H_1 = 75'-2"$ ,  $H_0 = 44'-7"$



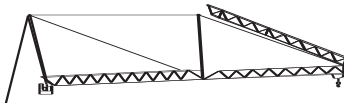
Jib Configuration: L40 with maximum hook reach of 131'-3" set at 0 degrees														
Hook Reach (ft)	11'-6"	46'-11"	49'-3"	55'-9"	65'-7"	72'-2"	82'-0"	84'-8"	88'-7"	98'-5"	105'-0"	114'-10"	121'-5"	131'-3"
Reeving	Capacities (lbs)													
DM	13,228	13,228	12,478	10,681	8,741	7,771	6,636	-	6,030	5,280	4,861	4,332	4,034	3,638
SM1	6,614	6,614	6,614	6,614	6,614	6,614	6,614	6,614	6,250	5,501	5,082	4,553	4,255	3,858

Maximum Hook Heights at Jib Tip:  $H_2 = 111'-6"$ ,  $H_1 = 81'-0"$ ,  $H_0 = 50'-6"$   
 Maximum Hook Heights at Jib Foot:  $H_2 = 105'-8"$ ,  $H_1 = 75'-2"$ ,  $H_0 = 44'-7"$



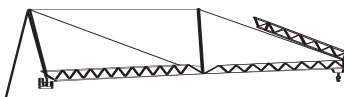
Jib Configuration: L31 with maximum hook reach of 101'-8" set at 0 degrees										
Hook Reach (ft)	11'-6"	53'-10"	55'-9"	65'-7"	72'-2"	82'-0"	88'-7"	97'-5"	98'-5"	101'-8"
Reeving	Capacities (lbs)									
DM	13,228	13,228	12,621	10,351	9,226	7,893	7,187	-	6,316	6,063
SM1	6,614	6,614	6,614	6,614	6,614	6,614	6,614	6,614	6,537	6,283

Maximum Hook Heights at Jib Tip:  $H_2 = 110'-2"$ ,  $H_1 = 79'-8"$ ,  $H_0 = 49'-2"$   
 Maximum Hook Heights at Jib Foot:  $H_2 = 105'-8"$ ,  $H_1 = 75'-2"$ ,  $H_0 = 44'-7"$



Jib Configuration: L45 with maximum hook reach of 101'-8" set at 0 degrees											
Hook Reach (ft)	11'-6"	46'-3"	49'-3"	55'-9"	65'-7"	72'-2"	82'-0"	83'-0"	88'-7"	98'-5"	101'-8"
Reeving	Capacities (lbs)										
DM	13,228	13,228	12,247	10,483	8,576	7,628	6,504	-	5,908	5,181	4,960
SM1	6,614	6,614	6,614	6,614	6,614	6,614	6,614	6,614	6,129	5,401	5,181

Maximum Hook Heights at Jib Tip:  $H_2 = 110'-2"$ ,  $H_1 = 79'-8"$ ,  $H_0 = 49'-2"$   
 Maximum Hook Heights at Jib Foot:  $H_2 = 105'-8"$ ,  $H_1 = 75'-2"$ ,  $H_0 = 44'-7"$



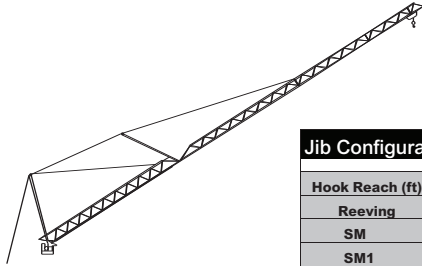
Jib Configuration: L40 with maximum hook reach of 101'-8" set at 0 degrees											
Hook Reach (ft)	11'-6"	48'-7"	49'-3"	55'-9"	65'-7"	72'-2"	82'-0"	87'-7"	88'-7"	98'-5"	101'-8"
Reeving	Capacities (lbs)										
DM	13,228	13,228	12,985	11,133	9,105	8,102	6,923	-	6,283	5,512	5,291
SM1	6,614	6,614	6,614	6,614	6,614	6,614	6,614	6,614	6,504	5,732	5,512

Maximum Hook Heights at Jib Tip:  $H_2 = 110'-2"$ ,  $H_1 = 79'-8"$ ,  $H_0 = 49'-2"$   
 Maximum Hook Heights at Jib Foot:  $H_2 = 105'-8"$ ,  $H_1 = 75'-2"$ ,  $H_0 = 44'-7"$

HDT80

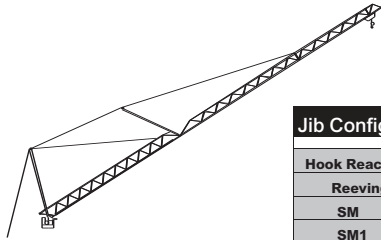
# rated load charts

5



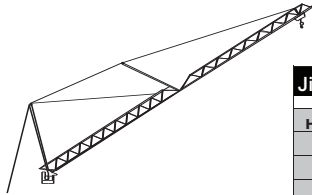
Jib Configuration: L45 with maximum hook reach of 128'-7" set at 30 degrees											
Hook Reach (ft)	11'-6"	66'-3"	68'-3"	72'-2"	82'-0"	88'-7"	98'-5"	105'-0"	114'-10"	121'-5"	128'-7"
Reeving	Capacities (lbs)										
SM	6,614	6,614	-	5,941	5,049	4,564	3,968	3,649	3,230	2,987	2,756
SM1	6,614	6,614	6,614	6,162	5,269	4,784	4,189	3,869	3,450	3,208	2,976

Maximum Hook Heights at Jib Tip:  $H_2 = 176'-2"$ ,  $H_1 = 145'-8"$   
 Maximum Hook Heights at Jib Foot:  $H_2 = 105'-8"$ ,  $H_1 = 75'-2"$



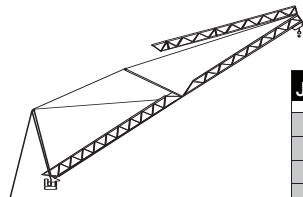
Jib Configuration: L40 with maximum hook reach of 114'-6" set at 30 degrees										
Hook Reach (ft)	11'-6"	72'-2"	74'-2"	82'-0"	88'-7"	98'-5"	105'-0"	114'-6"		
Reeving	Capacities (lbs)									
SM	6,614	6,614	-	5,611	5,093	4,442	4,079	3,638		
SM1	6,614	6,614	6,614	5,831	5,313	4,663	4,299	3,858		

Maximum Hook Heights at Jib Tip:  $H_2 = 168'-0"$ ,  $H_1 = 137'-6"$   
 Maximum Hook Heights at Jib Foot:  $H_2 = 105'-8"$ ,  $H_1 = 75'-2"$



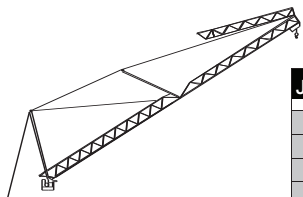
Jib Configuration: L31 with maximum hook reach of 88'-11" set at 30 degrees									
Hook Reach (ft)	11'-6"	83'-0"	85'-4"	88'-11"					
Reeving	Capacities (lbs)								
SM	6,614	6,614	-	6,063					
SM1	6,614	6,614	6,614	6,283					

Maximum Hook Heights at Jib Tip:  $H_2 = 159'-9"$ ,  $H_1 = 129'-3"$   
 Maximum Hook Heights at Jib Foot:  $H_2 = 105'-8"$ ,  $H_1 = 75'-2"$



Jib Configuration: L45 with maximum hook reach of 88'-11" set at 30 degrees									
Hook Reach (ft)	11'-6"	70'-10"	72'-2"	72'-10"	82'-0"	88'-11"			
Reeving	Capacities (lbs)								
SM	6,614	6,614	6,471	-	5,501	4,960			
SM1	6,614	6,614	6,614	6,614	5,721	5,181			

Maximum Hook Heights at Jib Tip:  $H_2 = 159'-9"$ ,  $H_1 = 129'-3"$   
 Maximum Hook Heights at Jib Foot:  $H_2 = 105'-8"$ ,  $H_1 = 75'-2"$



Jib Configuration: L40 with maximum hook reach of 88'-11" set at 30 degrees									
Hook Reach (ft)	11'-6"	74'-6"	76'-5"	82'-0"	82'-11"				
Reeving	Capacities (lbs)								
SM	6,614	6,614	-	5,864	5,291				
SM1	6,614	6,614	6,614	6,085	5,512				

Maximum Hook Heights at Jib Tip:  $H_2 = 159'-9"$ ,  $H_1 = 129'-3"$   
 Maximum Hook Heights at Jib Foot:  $H_2 = 105'-8"$ ,  $H_1 = 75'-2"$

Reeving Abbreviations:  
 DM = double block with double reeving  
 SM = single block with double reeving  
 SM1 = single block with single reeving

Note: The minimum hook radius for all jib configurations is 11'-6".

HDT80

# mechanical data

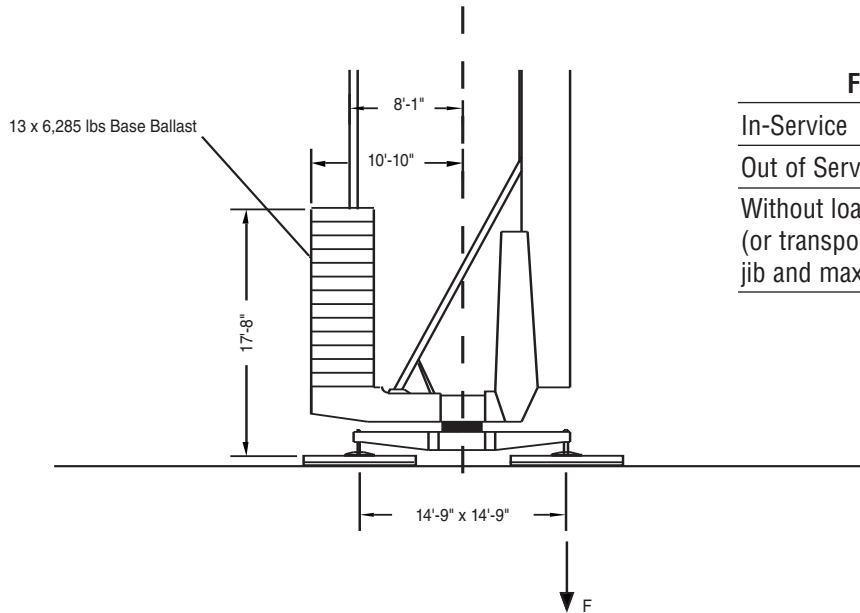
6

Function	Hoist Type	Speed vs Weight	2-part				4-part				Motor (hp)	Motor (kW)
			1st Gear	2nd Gear	3rd Gear	4th Gear	1st Gear	2nd Gear	3rd Gear	4th Gear		
Hoist	20 LVF 15	ft/min lbs	86 6,614	138 3,968	171 3,086	224 1,543	43 13,228	69 7,937	86 6,173	112 3,086	20	15
	25 PC 15	ft/min lbs	28 6,614	111 6,614	221 3,307		14 13,228	56 13,228	111 6,614		25	18
Trolley	5 DVF 5	ft/min	30 - 73 - 191 (6,614 lbs)				30 - 73 - 145 (13,228 lbs)				6.5	4.8
Swing	RVF2-61	rpm	0.8								8.0	5.9

**Power Requirements:** 480 V (+6% or -10%) 60 Hz measured at turn table.

**Amperage:** 20 LVF 15: 43 Amp (3 phase service with ground)

**Amperage:** 25 PC 15: 51 Amp (3 phase service with ground)



### F = Maximum Corner Force

In-Service	88,185 lbs.
Out of Service	94,799 lbs.
Without load, ballast (or transport axles), with jib and maximum height	51,600 lbs.

## Warning Systems

**Limit Moment Cut-Out** – Prevents a moment that is more than +10%.

### Warning

1. The operator must read and understand the owner's manual before operating this crane.
2. Positioning or operation of crane beyond areas shown is not intended or approved except where specified in owner's manual.
3. Practical working loads depend on supporting surface, wind, and other factors affecting stability such as hazardous surroundings, experience of personnel, and proper handling, all of which must be taken into account by the operator.

HDT80

# Crane Care

Crane Care is Manitowoc's complete service and support program. Incorporated into this program are service training, immediate parts availability, professional field service, and technical support and documentation. Crane Care is available for every one of the thousands of cranes operating all over the world.

That's dedication and devotion that you won't get anywhere else.

That's **Crane Care**.

## Service Training

A certified Manitowoc service specialist works with you in your training facility or in the field to ensure that you know how to achieve maximum performance, dependability, and years from your cranes.

A reputable Manitowoc Service technician comes to you to provide valuable training to all distributors on the crane's LMI system.

## Parts Availability

Genuine Manitowoc replacement parts may be obtained through your MCG distributor on a regular basis.

## Field Service

Factory-trained service experts are always ready to help maintain your crane's peak performance.

For a worldwide listing of dealer locations, please consult our website at: [www.manitowoc.com](http://www.manitowoc.com).

## Technical Support

Manitowoc's dealer network and factory personnel are available 24 hours a day, 7 days a week, 365 days a year to answer your technical questions and more.

7

For a worldwide listing of dealer locations, please consult our website at: [www.manitowoc.com](http://www.manitowoc.com).

## Technical Documentation

Manitowoc boasts an extensive, easy-to-understand library of documentation.

A complete set of Operator's parts and service manuals are included with each crane.

Additional copies are available through your Authorized Manitowoc Distributor.

HDT80

## Regional Headquarters

### Americas

Manitowoc, Wisconsin, USA

Tel: +1 920 684 6621

Fax: +1 920 683 6278

Shady Grove, Pennsylvania, USA

Tel: +1 717 597 8121

Fax: +1 717 597 4062

## Regional Offices

### Americas

#### Brazil

Alphaville

Tel: +55 11 3103 0200

Fax: +55 11 4688 2013

#### Mexico

Monterrey

Tel: +52 81 8124 0128

Fax: +52 81 8124 0129

### Europe, Middle East, Africa

#### Algeria

Hydra

Tel: +21 3 21 48 1173

Fax: +21 3 21 48 1454

#### Czech Republic

Netvorice

Tel: +420 317 78 9313

Fax: +420 317 78 9314

#### France

Baudemont

Tel: +33 385 28 2589

Fax: +33 385 28 0430

Cergy

Tel: +33 130 31 3150

Fax: +33 130 38 6085

Decines

Tel: +33 472 81 5000

Fax: +33 472 81 5010

#### Germany

Langenfeld

Tel: +49 21 73 8909-0

Fax: +49 21 73 8909 30

#### Hungary

Budapest

Tel: +36 13 39 8622

Fax: +36 13 39 8622

#### Italy

Parabiago

Tel: +390 331 49 3311

Fax: +390 331 49 3330

### Europe, Middle East, Africa

Ecully, France

Tel: +33 472 18 2020

Fax: +33 472 18 2000

#### Netherlands

Breda

Tel: +31 76 578 3999

Fax: +31 76 578 3978

#### Poland

Warsaw

Tel: +48 22 843 3824

Fax: +48 22 843 3471

#### Portugal

Alfena

Tel: +351 229 69 8840

Fax: +351 229 69 8848

Lisbon

Tel: +351 212 109 340

Fax: +351 212 109 349

#### Russia

Moscow

Tel: +7 495 641 2359

Fax: +7 495 641 2358

#### U.A.E.

Dubai

Tel: +971 4 3381 861

Fax: +971 4 3382 343

#### U. K.

Middlesex

Tel: +44 1 895 43 0053

Fax: +44 1 895 45 9500

Sunderland

Tel: +44 191 522 2000

Fax: +44 191 522 2052

### Asia – Pacific

#### Australia

Melbourne

Tel: +61 3 9 336 1300

Fax: +61 3 9 336 1322

Sydney

Tel: +61 2 9 896 4433

Fax: +61 2 9 896 3122

### Asia – Pacific

Shanghai, China

Tel: +86 21 51113579

Fax: +86 21 51113578

Singapore

Tel: +65 6264 1188

Fax: +65 6862 4142

#### China

Beijing

Tel: +86 10 58674761

Fax: +86 10 58674760

Xi'an

Tel: +86 29 87891465

Fax: +86 29 87884504

#### Korea

Seoul

Tel: +82 2 3439 0400

Fax: +82 2 3439 0405

#### Philippines

Makati City

Tel: +63 2 844 9437

Fax: +63 2 844 4712

#### Factories

Brazil

Alphaville

China

Zhangjiagang

France

Charlieu

La Clayette

Moulins

Germany

Wilhelmshaven

India

Calcutta

Pune

Italy

Niella Tanaro

Portugal

Baltar

Fânzeres

Slovakia

Saris

U.S.A.

Manitowoc

Port Washington

Shady Grove

Constant improvement and engineering progress make it necessary that we reserve the right to make specification, equipment and price changes without notice. Illustrations shown may include optional equipment and accessories, and may not include all standard equipment.