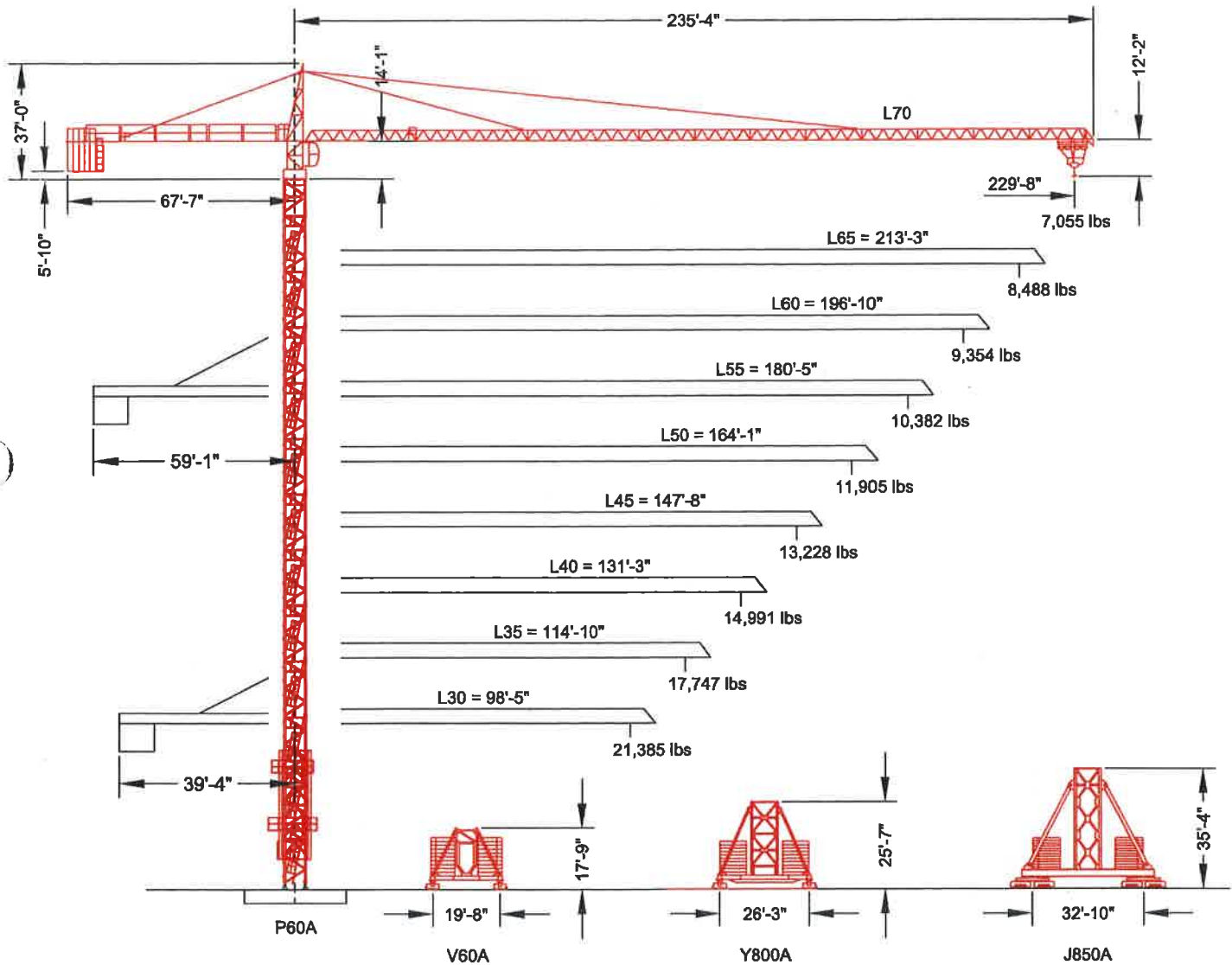


MD 310B-K12

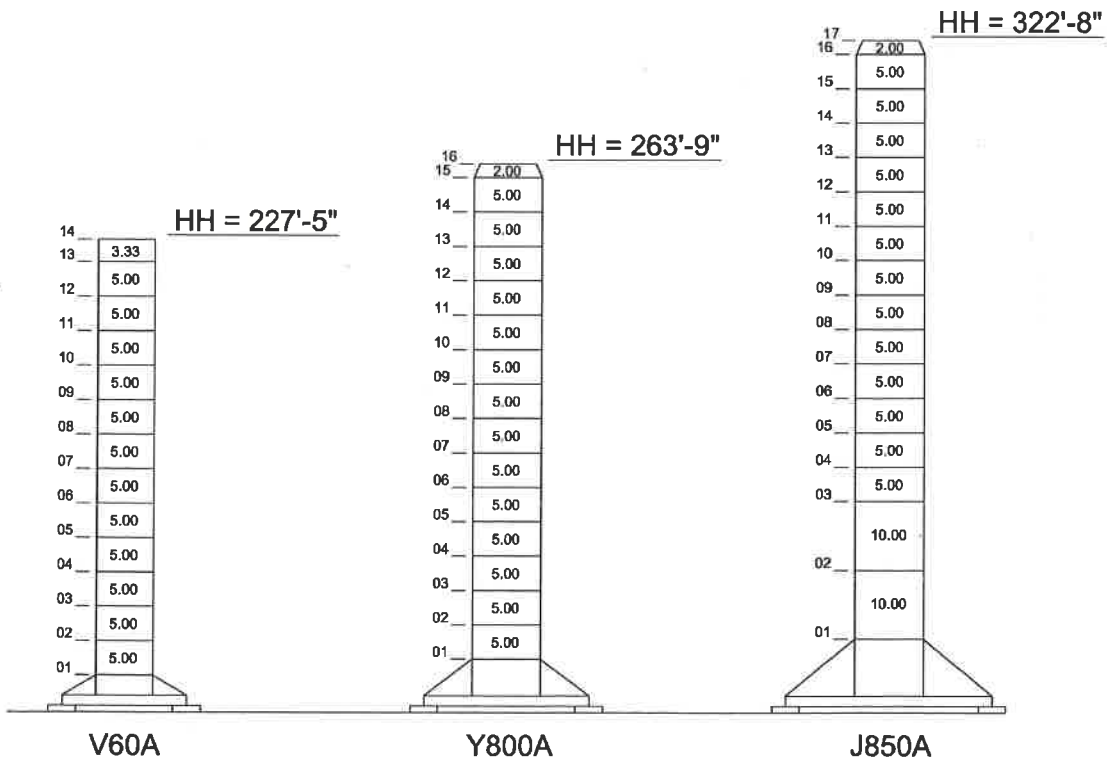
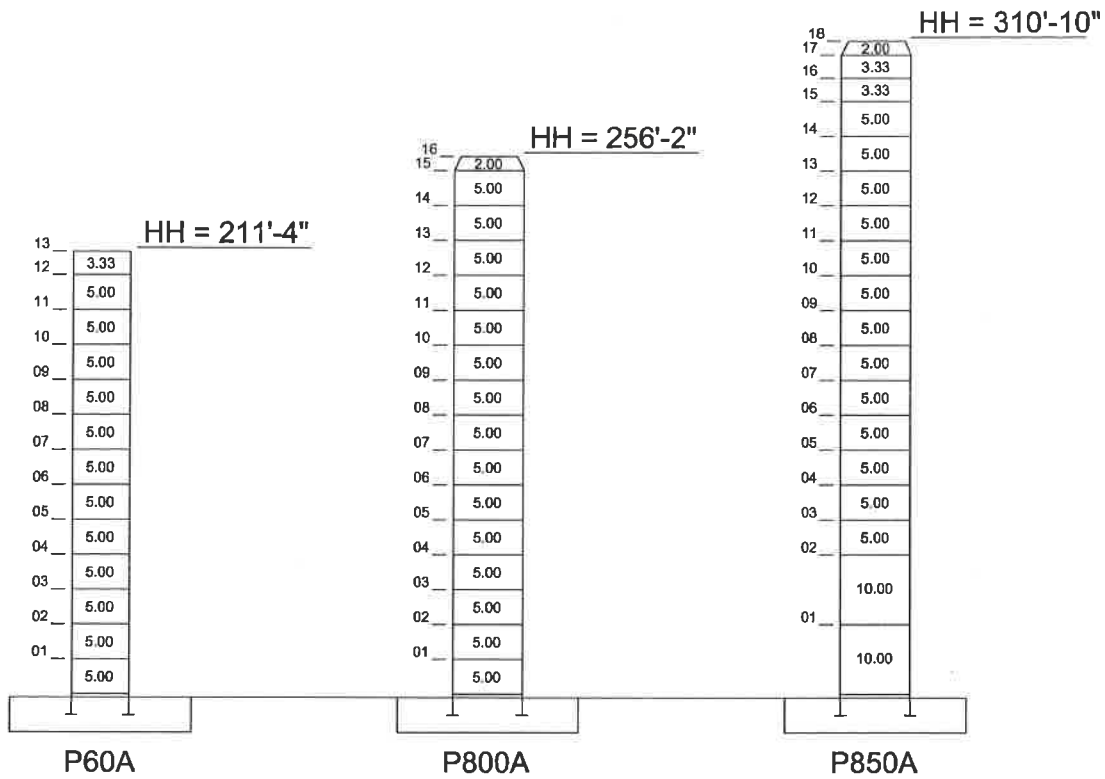
Maximum Capacity = 26,455 lbs



Note: Tip capacities are dependent on certain trolley types.

F.E.M. 1.001

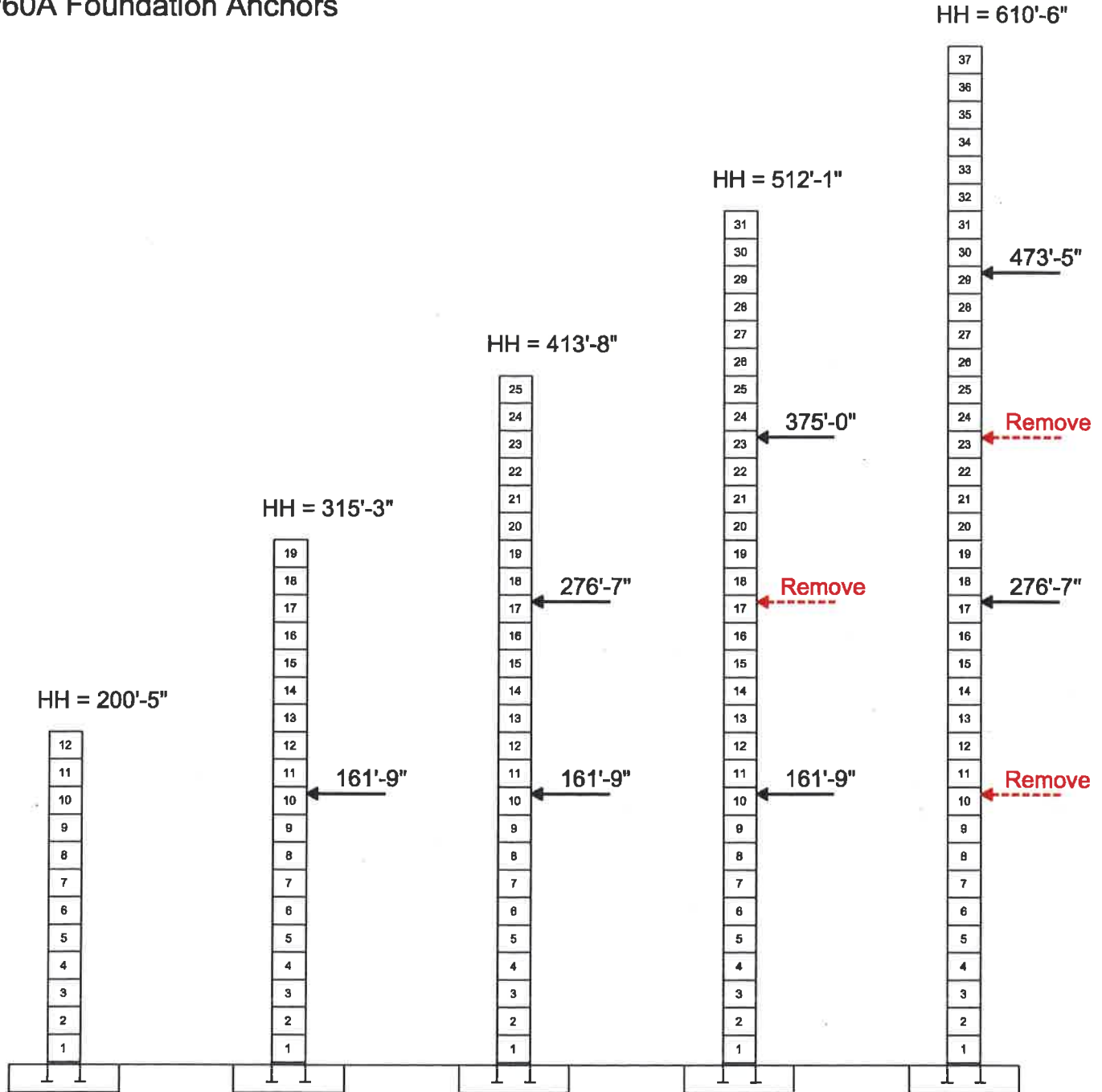
Maximum Free-Standing Hook Heights



External Climbing

Jib Configurations: L30 thru L70 (98'-5" thru 229'-8")

P60A Foundation Anchors



Rated Load Chart



SM-DM Trolley

Capacity (lbs)

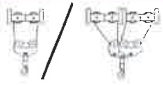
Hook Radius	229'-8"	213'-3"	196'-10"	180'-5"	164'-1"	147'-8"	131'-3"	114'-10"	98'-5"
20'-0"	26,455	26,455	26,455	26,455	26,455	26,455	26,455	26,455	26,455
30'-0"	26,455	26,455	26,455	26,455	26,455	26,455	26,455	26,455	26,455
40'-0"	26,455	26,455	26,455	26,455	26,455	26,455	26,455	26,455	26,455
50'-0"	26,455	26,455	26,455	26,455	26,455	26,455	26,455	26,455	26,455
60'-0"	26,455	26,455	26,455	26,455	26,455	26,455	26,455	26,455	26,455
70'-0"	26,455	26,455	26,455	26,455	26,455	26,455	26,455	26,455	26,455
80'-0"	22,978	24,570	24,824	24,831	25,373	25,985	26,455	26,455	26,455
90'-0"	19,937	21,372	21,622	21,628	22,108	22,650	23,563	23,690	23,779
98'-5"	17,866	19,195	19,442	19,448	19,886	20,380	21,213	21,329	21,385
100'-0"	17,519	18,830	19,076	19,082	19,513	20,000	20,819	20,933	
110'-0"	15,551	16,760	17,004	17,009	17,400	17,842	18,585	18,688	
114'-10"	14,726	15,893	16,136	16,140	16,515	16,937	17,648	17,747	
120'-0"	13,917	15,043	15,285	15,289	15,647	16,051	16,731		
130'-0"	12,944	13,594	13,835	13,839	14,169	14,541	15,167		
131'-3"	12,789	13,431	13,672	13,676	14,002	14,371	14,991		
140'-0"	11,767	12,762	13,000	13,001	13,228	13,250			
147'-8"	10,977	11,931	12,168	12,170	12,463	12,787			
150'-0"	10,749	11,692	11,929	11,930	12,218				
160'-0"	9,861	10,757	10,993	10,995	11,265				
164'-1"	9,533	10,413	10,648	10,649	10,913				
170'-0"	9,079	9,935	10,170	10,171					
180'-0"	8,384	9,205	9,439	9,440					
180'-5"	8,355	9,174	9,408	9,409					
190'-0"	7,764	8,553	8,786						
196'-10"	7,376	8,145	8,378						
200'-0"	7,207	7,966							
210'-0"	6,703	7,437							
213'-3"	6,550	7,275							
220'-0"	6,246								
229'-8"	5,842								

Max. Load Radius									
From	8'-6"	8'-6"	8'-6"	8'-6"	8'-6"	8'-6"	8'-6"	8'-6"	8'-6"
To	71'-1"	75'-1"	75'-9"	75'-9"	77'-2"	78'-9"	81'-6"	81'-10"	82'-2"

Notes:

1. The above load chart was calculated using the SM-DM trolley system.
2. Values above the red line can be achieved with 4-part line configuration only.
3. Deduct 551 lbs from values below the red line when using 4-part line configuration instead of 2-part.

Rated Load Chart



1C-2C Trolley

2-Part Capacity (lbs)

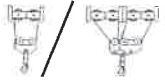
Hook Radius	229'-8"	213'-3"	196'-10"	180'-5"	164'-1"	147'-8"	131'-3"	114'-10"	98'-5"
20'-0"	13,228	13,228	13,228	13,228	13,228	13,228	13,228	13,228	13,228
30'-0"	13,228	13,228	13,228	13,228	13,228	13,228	13,228	13,228	13,228
40'-0"	13,228	13,228	13,228	13,228	13,228	13,228	13,228	13,228	13,228
50'-0"	13,228	13,228	13,228	13,228	13,228	13,228	13,228	13,228	13,228
60'-0"	13,228	13,228	13,228	13,228	13,228	13,228	13,228	13,228	13,228
70'-0"	13,228	13,228	13,228	13,228	13,228	13,228	13,228	13,228	13,228
80'-0"	13,228	13,228	13,228	13,228	13,228	13,228	13,228	13,228	13,228
90'-0"	13,228	13,228	13,228	13,228	13,228	13,228	13,228	13,228	13,228
98'-5"	13,228	13,228	13,228	13,228	13,228	13,228	13,228	13,228	13,228
100'-0"	13,228	13,228	13,228	13,228	13,228	13,228	13,228	13,228	
110'-0"	13,228	13,228	13,228	13,228	13,228	13,228	13,228	13,228	
114'-10"	13,228	13,228	13,228	13,228	13,228	13,228	13,228	13,228	
120'-0"	13,228	13,228	13,228	13,228	13,228	13,228	13,228		
130'-0"	13,228	13,228	13,228	13,228	13,228	13,228	13,228		
131'-3"	13,228	13,228	13,228	13,228	13,228	13,228	13,228		
140'-0"	12,961	13,228	13,228	13,228	13,228	13,228			
147'-8"	12,173	13,131	13,130	13,131	13,228	13,228			
150'-0"	11,946	12,892	12,891	12,892	13,208				
160'-0"	11,061	11,960	11,960	11,961	12,256				
164'-1"	10,734	11,616	11,616	11,617	11,905				
170'-0"	10,281	11,140	11,139	11,140					
180'-0"	9,589	10,412	10,411	10,412					
180'-5"	9,560	10,381	10,381	10,382					
190'-0"	8,971	9,762	9,761						
196'-10"	8,584	9,355	9,354						
200'-0"	8,415	9,177							
210'-0"	7,913	8,649							
213'-3"	7,760	8,488							
220'-0"	7,457								
229'-8"	7,055								

Max. Load Radius									
From	10'-2"	10'-2"	10'-2"	10'-2"	10'-2"	10'-2"	10'-2"	10'-2"	10'-2"
To	137'-7"	146'-8"	146'-8"	146'-8"	149'-10"	147'-8"	131'-3"	114'-10"	98'-5"

MD 310B-K12



Rated Load Chart



1C-2C Trolley

4-Part Capacity (lbs)

Hook Radius	229'-8"	213'-3"	196'-10"	180'-5"	164'-1"	147'-8"	131'-3"	114'-10"	98'-5"
20'-0"	26,455	26,455	26,455	26,455	26,455	26,455	26,455	26,455	26,455
30'-0"	26,455	26,455	26,455	26,455	26,455	26,455	26,455	26,455	26,455
40'-0"	26,455	26,455	26,455	26,455	26,455	26,455	26,455	26,455	26,455
50'-0"	26,455	26,455	26,455	26,455	26,455	26,455	26,455	26,455	26,455
60'-0"	26,455	26,455	26,455	26,455	26,455	26,455	26,455	26,455	26,455
70'-0"	26,455	26,455	26,455	26,455	26,455	26,455	26,455	26,455	26,455
80'-0"	22,669	24,485	24,485	24,485	25,084	25,700	26,455	26,455	26,455
90'-0"	19,637	21,295	21,295	21,295	21,826	22,372	23,347	23,472	23,559
98'-5"	17,573	19,124	19,124	19,124	19,609	20,106	20,996	21,110	21,164
100'-0"	17,226	18,760	18,760	18,760	19,236	19,726	20,601	20,714	
110'-0"	15,264	16,696	16,696	16,696	17,128	17,572	18,366	18,468	
114'-10"	14,441	15,831	15,831	15,831	16,244	16,669	17,429	17,527	
120'-0"	13,635	14,983	14,983	14,983	15,379	15,785	16,511		
130'-0"	12,262	13,539	13,539	13,539	13,903	14,278	14,947		
131'-3"	12,108	13,376	13,376	13,376	13,737	14,108	14,771		
140'-0"	11,089	12,305	12,305	12,305	12,643	12,990			
147'-8"	10,301	11,476	11,476	11,476	11,797	12,125			
150'-0"	10,074	11,238	11,238	11,238	11,553				
160'-0"	9,189	10,306	10,306	10,306	10,601				
164'-1"	8,862	9,962	9,962	9,962	10,250				
170'-0"	8,409	9,486	9,486	9,486					
180'-0"	7,717	8,758	8,758	8,758					
180'-5"	7,688	8,727	8,727	8,727					
190'-0"	7,098	8,108	8,108						
196'-10"	6,711	7,701	7,701						
200'-0"	6,543	7,523							
210'-0"	6,040	6,995							
213'-3"	5,887	6,834							
220'-0"	5,584								
229'-8"	5,182								

		Max. Load Radius							
From	To	10'-2"	10'-2"	10'-2"	10'-2"	10'-2"	10'-2"	10'-2"	10'-2"
		70'-4"	74'-11"	74'-11"	74'-11"	76'-5"	78'-0"	80'-11"	81'-3"
									81'-7"

MD 310B-K12

